

**SUZUKI**

PARTS CATALOGUE

**DF2.5**

**DF2.5** 06 ~ '08MODEL

**OUTBOARD MOTOR**

2007-6

**P1**  
**3**RD EDITION

This part catalogue supersedes all the following parts catalogues with immediate effect.

Model of catalogue	Parts catalogue No.
DF2.5 '06 ~ '07 MODEL	9900B-45208-010

INFORMATION  
ILLUSTRATION INDEX

**1**

ENGINE

**2**

TRANSMITTING

**3**

ELECTRICAL

**4**

EXTERIOR

**5**

OPTION

**6**

PARTS NUMBER INDEX

**7**



**DF2.5** 06 ~ '08MODEL





## PREFACE

When it becomes necessary to replace parts on SUZUKI OUTBOARD MOTORS, always use SUZUKI GENUINE PARTS which have passed a strict inspection which guarantees quality and performance.

This parts catalogue covers the list of all service parts for SUZUKI DF2.5 '06~'08 MODEL.

### INSTRUCTIONS FOR QUOTING THE CATALOGUE

#### 1. DIMENSIONS

Dimensions of the parts in this catalogue are indicated in unit millimeters.

#### 2. ABBREVIATIONS

Abbreviations used in this catalogue are as follows :

AR	: As required	NT	: Number of teeth
ASSY	: Assembly	OPT	: Optional
E. No.	: Engine number	OS	: Over size
F. No.	: Frame number	STD	: Standard
D	: Diameter of material	T	: Thickness
ID	: Inside diameter	US	: Under size
OD	: Outside diameter	W	: Width
L	: Length	W/	: With
LH(PORT)	: Left hand side	S, L	: Transom type
RH(STBD)	: Right hand side	SUS	: Stainless steel
~123456	: Up to E. No. 00251F-123456		
123456~	: From E. No. 00251F-123456		

12 x 34 x 5.6 ..... Figures in the description column  
show the dimensions of parts.

ID OD T(or W, L)

12345-56781 (Parts No.) : indicates that the parts number was changed to 12345-56781 and the new parts are interchangeable with the former ones but the former ones are not interchangeable with new ones.

12345-56781 (Parts No.) : indicates that the former and new parts are interchangeable with each other and both are usable.

#### 3. INNER PARTS OF ASSEMBLY

Part name with a dot ( . ) in front as shown in the description column indicates the component of the assembly also available individually.

#### 4. MODIFICATION NOTICE

A parts bulletin will be sent to you on all occasions when changes in parts occur, including interchangeable modifications between new parts and old ones.

#### 5. NOTE

- 5-1. There are some different parts from those of production models among spare parts for the administrative reasons and common use of them with other models.
- 5-2. In respect of rubber hoses and vinyl tubes, please be sure to use them by cutting off according to the length mentioned on parts catalogue or what is actually required on the vehicle.
- 5-3. Note that the drawings on the illustration page are for ready reference of spare parts number, not to be used as an assembly manual.  
When assembling, use "SUZUKI SERVICE MANUAL".

#### 6. MODEL NAME AND ENGINE NUMBER

MODEL	YEAR'S	TYPE	TRANSOM	ENGINE No.
DF2.5SK6	'06	00251F	S	00251F-680001 ~
DF2.5SK7	'07	00251F	S	00251F-780001 ~
DF2.5SK8	'08	00251F	S	00251F-880001 ~



MILLIMETER INCH CONVERSION CHART  
 TABLEAU DE CONVERSION DE MILLIMETRES POUCES  
 CUADRO DE CONVERSION A UNIDAD DE MILIMETRO PULGADA  
 MILLIMETER ZOLL UMRECHNUNGSTABELLE

	0	1	2	3	4	5	6	7	8	9
00	.000	.039	.079	.118	.157	.197	.236	.276	.315	.354
10	.394	.433	.472	.512	.551	.591	.630	.669	.709	.748
20	.787	.827	.866	.906	.945	.984	1.024	1.063	1.102	1.142
30	1.181	1.220	1.260	1.299	1.339	1.378	1.417	1.457	1.496	1.535
40	1.575	1.614	1.654	1.693	1.732	1.772	1.811	1.850	1.890	1.929
50	1.969	2.008	2.047	2.087	2.126	2.165	2.205	2.214	2.283	2.323
60	2.362	2.402	2.441	2.480	2.520	2.559	2.598	2.638	2.677	2.717
70	2.756	2.795	2.835	2.874	2.913	2.953	2.992	3.031	3.071	3.110
80	3.150	3.189	3.228	3.268	3.307	3.346	3.386	3.425	3.465	3.504
90	3.543	3.583	3.622	3.661	3.701	3.740	3.780	3.819	3.858	3.898

How to read  
 Mode de lecture  
 Modo de leer  
 Anleitung

	0	1	2	3	4
00	---	---	---	---	---
10	---	---	---	---	---
20	---	---	---	0.906	---
30	---	---	---	---	---

23 millimeters equal 0.906 inch  
 23 millimètres égalent 0.906 pouce  
 23 milímetros = 0.906 pulgada  
 23 millimeter entspricht 0.906 zoll

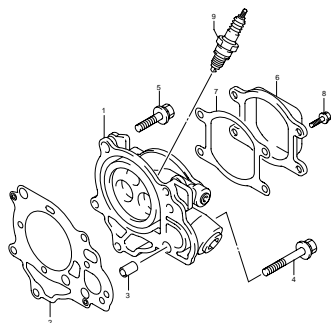
Contents are subject to change without notice or obligation.

Les matières traitées sont susceptibles d'être modifiées sans préavis obligation de notre part.

El contenido está sujeto a modificaciones sin previo aviso.

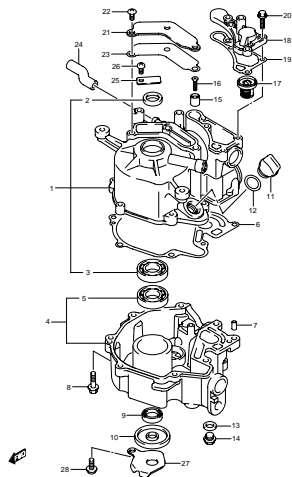
Hnderungen vorbehalten.

FIG.1 CYLINDER HEAD (B-2)



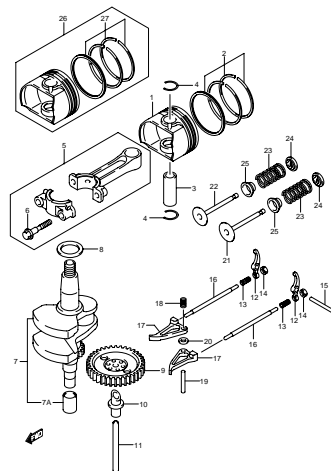
DF2.5 P01\_001  
CYLINDER HEAD-C

FIG.2 CYLINDER BLOCK (B-3)



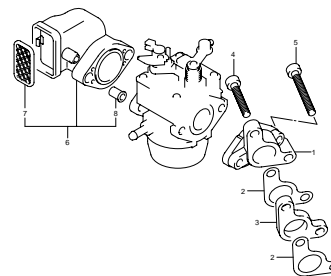
DF2.5 P01\_002  
CYLINDER BLOCK-C

FIG.3 CRANKSHAFT (B-4)



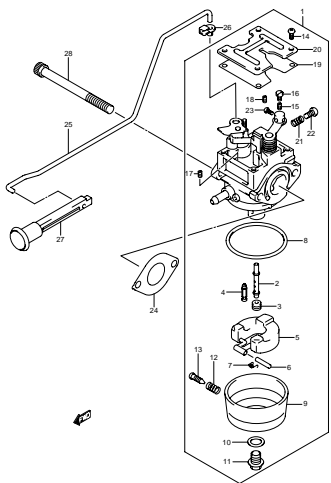
DF2.5 P01\_003  
CRANKSHAFT-C

FIG.4 INTAKE PIPE / SILENCER (B-5)



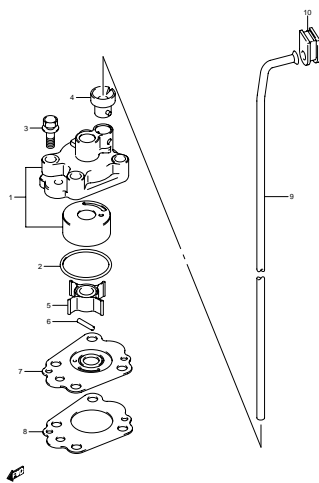
DF2.5 P01\_004  
INTAKE PIPE/SILENCER-C

FIG.5 CARBURETOR (B-6)



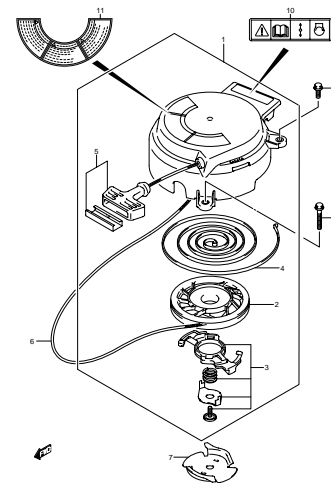
DF2.5 P01\_005  
CARBURETOR-C

FIG.6 WATER PUMP (B-8)



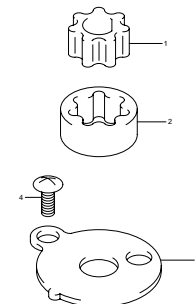
DF2.5 P01\_006  
WATER PUMP-C

FIG.7 RECOIL STARTER (B-9)



DF2.5 P01\_007  
RECOIL STARTER-C

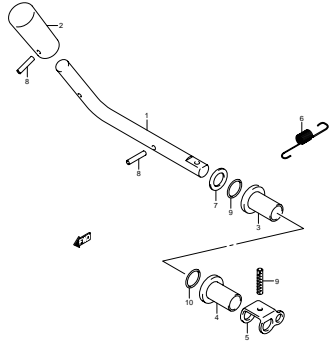
FIG.8 OIL PUMP (B-10)



DF2.5 P01\_008  
OIL PUMP-C

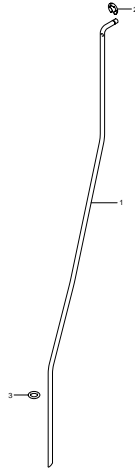


FIG.9 CLUTCH LEVER (C-2)



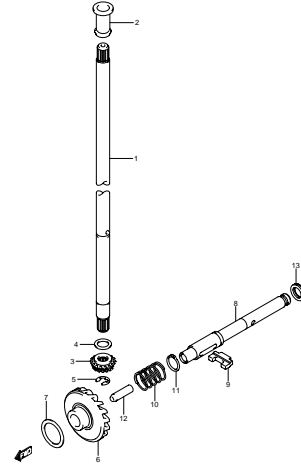
DF2.5 P01\_009  
CLUTCH LEVER-C

FIG.10 SHIFT ROD (C-3)



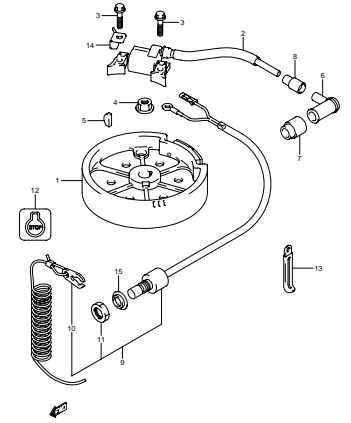
DF2.5 P01\_010  
SHIFT ROD-C

FIG.11 DRIVE SHAFT (C-4)



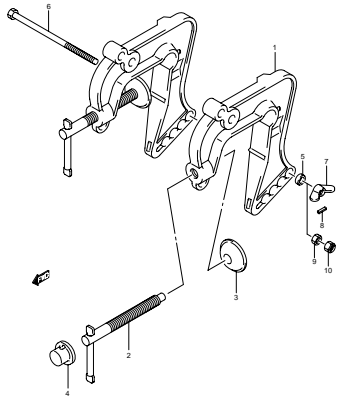
DF2.5 P01\_011  
DRIVE SHAFT-C

FIG.12 MAGNETO (C-5)



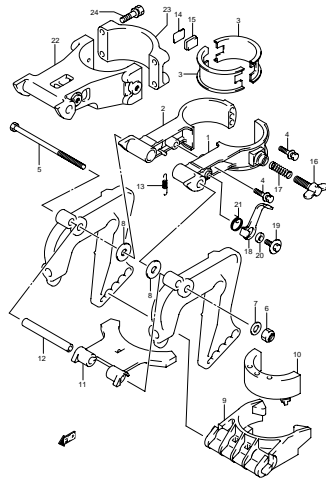
DF2.5 P01\_012  
MAGNETO-C

FIG.13 CLAMP BRACKET (D-2)



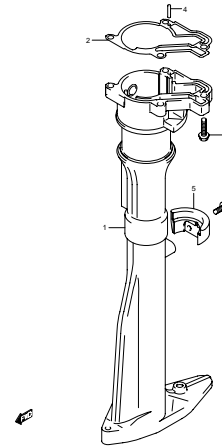
DF2.5 P01\_013  
CLAMP BRACKET-C

FIG.14 SWIVEL BRACKET (D-3)



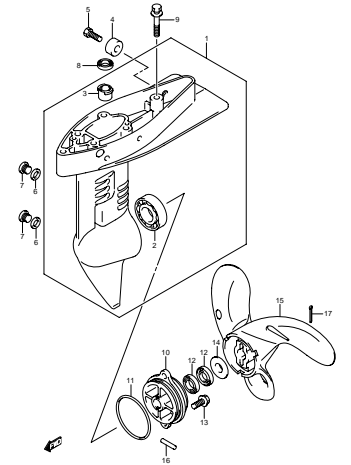
DF2.5 P01\_014  
SWIVEL BRACKET-C

FIG.15 DRIVE SHAFT HOUSING (D-4)



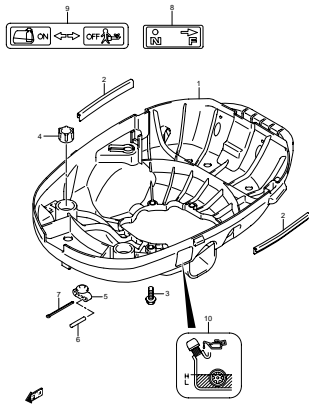
DF2.5 P01\_015  
DRIVE SHAFT HOUSING-C

FIG.16 GEAR CASE (D-5)



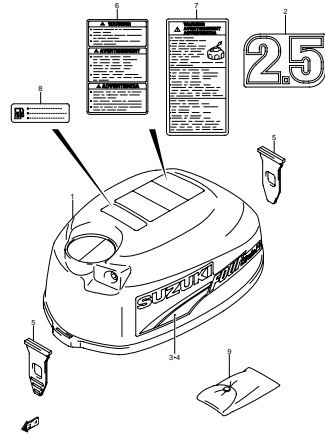
DF2.5 P01\_016  
GEAR CASE-C

FIG.17 LOWER COVER (D-6)



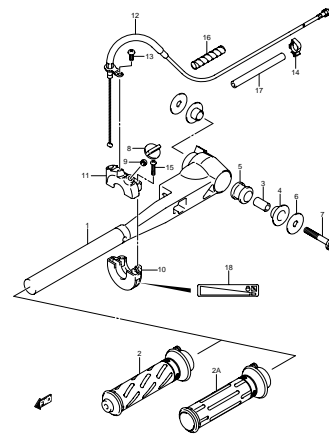
DF2.5 P01\_017  
LOWER COVER-C

FIG.18 ENGINE COVER (D-7)



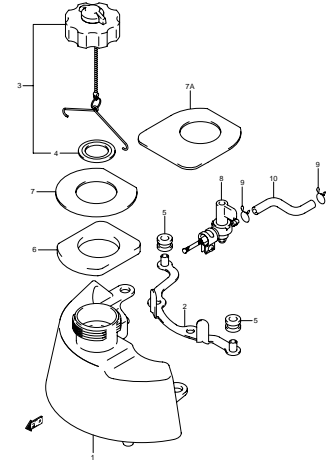
DF2.5 P01\_018  
ENGINE COVER-C

FIG.19 TILLER HANDLE (D-8)



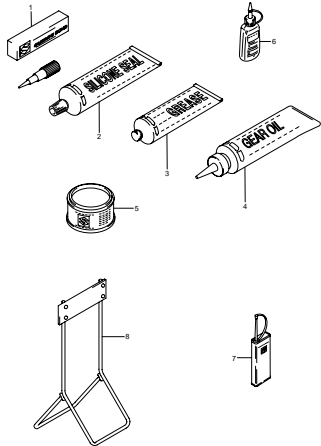
DF2.5 P01\_019  
TILLER HANDLE-C

FIG.20 FUEL TANK (D-9)



DF2.5 P01\_020  
FUEL TANK-C

FIG.21 OPTIONAL (D-10)



DF2.5 P01\_021  
OPTIONAL-C



FIG.1

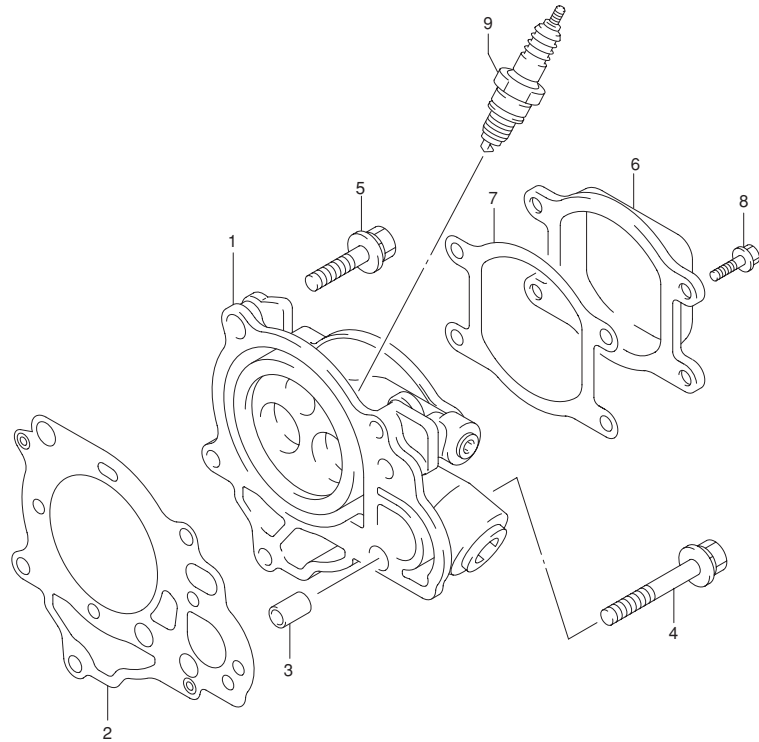


FIG.1 (B-2) CYLINDER HEAD

REF NO.	PART NO.	DESCRIPTION	Q'TY	REMARKS
1-1	11110-97J00	HEAD ,CYLINDER	1	
1-2	11110-97J10	HEAD ,CYLINDER	1	MODEL:08
2	11141-97J02	GASKET ,CYLINDER HEAD	1	
3	09206-08008	PIN ,DOWEL	2	
4	11118-97J00	BOLT ,CYLINDER HEAD	1	
5	11119-97J00	BOLT ,CYLINDER HEAD	4	
6	11171-97J00	COVER ,CYLINDER HEAD	1	
7	11189-97J00	GASKET ,CYLINDER HEAD COVER	1	
8	01547-05107	BOLT	4	
9	09482-00406	PLUG ,SPARK (CR6HSA )	1	



FIG.2

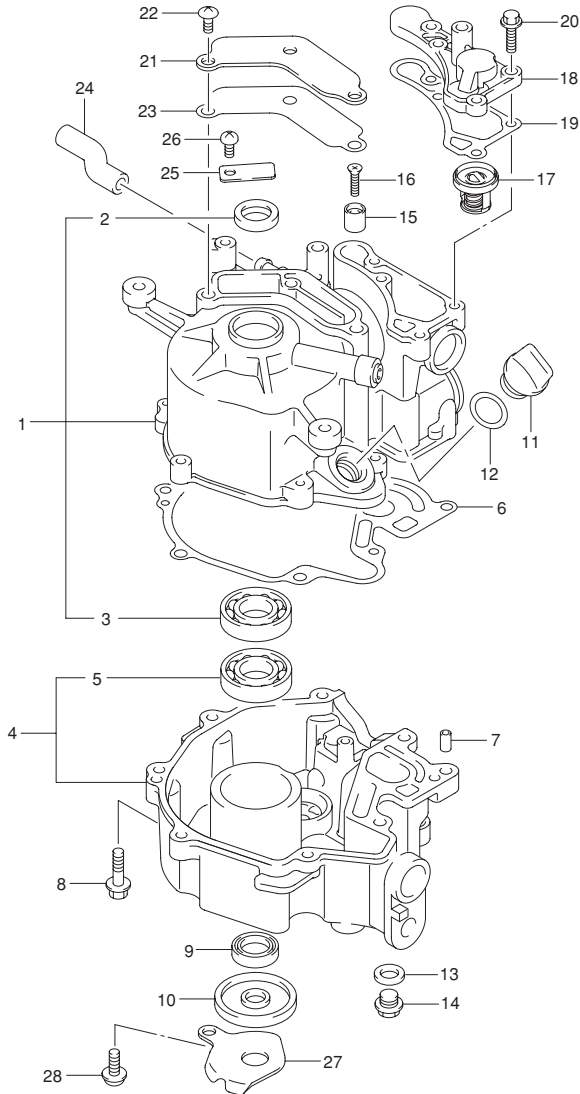


FIG.2 (B-3) CYLINDER BLOCK

REF NO.	PART NO.	DESCRIPTION	Q'TY	REMARKS
1	11200-97J00	BLOCK ASSY ,CYLINDER	1	
2	59295-97J00	·SEAL ,CRANKSHAFT OIL	1	
3	09262-17023	·BEARING ,CRANKSHAFT UPPER	1	
4	11300-97J00	CASE ASSY ,CRANKSHAFT	1	
5	09262-17023	·BEARING ,CRANKSHAFT LOWER	1	
6	11351-97J01	GASKET ,CRANKCASE	1	
7	04221-05109	PIN ,DOWEL	2	
8	01550-06257	BOLT ,CRANKCASE	8	
9	59295-97J10	SEAL ,DRIVE SHAFT OIL	1	
10	59295-97J20	SEAL ,CRANKSHAFT OIL LOWER	1	
11	11382-97J00	CAP ,OIL FILLER	1	
12	09280-15007	O RING ,CAP ( D:2.4 ID:15.8 )	1	
13	09168-10022	GASKET ,DRAIN PLUG	1	
14	09248-10008	PLUG ,DRAIN( 10X7.5 )	1	
15	55321-95J00	ANODE ,PROTECTION	1	
16	09126-05011	SCREW ,PROTECTION ANODE	1	
17	17670-91J00	THERMOSTAT	1	
18	17681-97J00	COVER ,THERMOSTAT	1	
19	17685-97J00	GASKET ,THERMOSTAT COVER	1	
20	01550-06207	BOLT ,THERMOSTAT COVER	4	
21	11173-97J00	PLATE ,BREATHER	1	
22	02142-06127	BOLT ,BREATHER PLATE	3	
23	11179-97J00	GASKET ,BREATHER PLATE	1	
24	11174-97J00	HOSE ,BREATHER	1	
25	11452-91J00	VALVE ,REED	1	
26	02112-0612A	SCREW ,REED VALVE	1	
27	11431-97J00	PLATE ,UNDER OIL SEAL	1	
28	01547-06127	BOLT ,UNDER OIL SEAL PLATE	1	

FIG.3

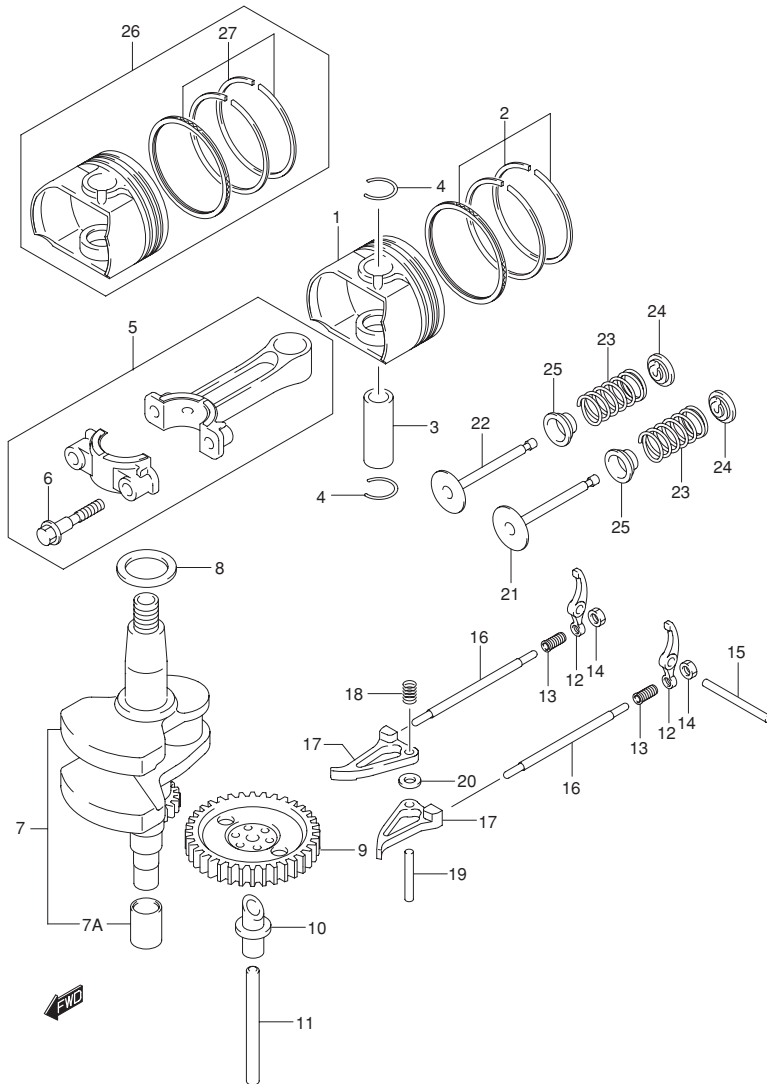


FIG.3 (B-4) CRANKSHAFT

REF NO.	PART NO.	DESCRIPTION	Q'TY	REMARKS
1-1	12111-97J00-0B0	PISTON	1	
1-2	12111-97J10-0B0	PISTON	1	MODEL:08
2	12140-97J00	RING SET ,PISTON	1	
3	12151-97J00	PIN ,PISTON	1	
4	59382-97J00	CIRCLIP	2	
5	12160-97J00-0A0	CONNROD ASSY	1	RED
6	12163-92F00	·BOLT CONNRD	2	
7	12220-97J01-0B0	CRANKSHAFT	1	NO PAINT
7A	12242-97J00	·SPLINE	1	
8	08211-17241	WASHER ,CRANKSHAFT THRUST	1	
9	12710-97J00	CAMSHAFT	1	
10	12742-97J00	SHAFT ,OIL PUMP	1	
11	12743-97J00	SHAFT	1	
12	12840-97J00	ARM ASSY , VALVE ROCKER	2	
13	12842-22G10	·SCREW ,TAPPET ADJUSTING	2	
14	12843-27A00	·NUT ,TAPPET ADJUSTING	2	
15	09261-04017	SHAFT , VALVE ROCKER ARM	1	
16	12894-97J00	ROD ,PUSH	2	
17	12845-97J00	ARM ,CAM ROCKER	2	
18	12847-22G00	SPRING ,CAM ROCKER ARM	1	
19	09261-04005	SHAFT ,CAM ROCKER ARM	1	
20	08322-0104A	WASHER ,CAM ROCKER ARM	2	
21	12911-97J00	VALVE ,INTAKE	1	
22	12915-97J00	VALVE ,EXHAUST	1	
23	12921-97J00	SPRING ,VALVE	2	
24	12931-22G00	RETAINER ,VALVE SPRING	2	
25	09289-04006	SEAL , VALVE STEM OIL	2	
26	12100-97J00-050	PISTON SET( OS:0.50 )	1	OPT
27	12140-97J00-050	·RING SET ,PISTON( OS:0.50 )	1	OPT

FIG.4

2

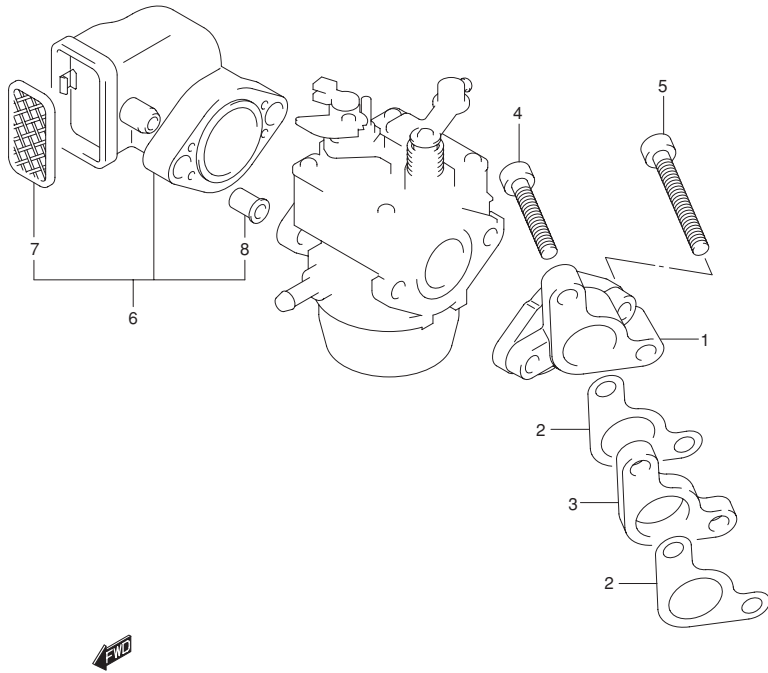


FIG.4 (B-5) INTAKE PIPE / SILENCER

REF NO.	PART NO.	DESCRIPTION	Q'TY	REMARKS
1	13111-97J00	PIPE ,INTAKE	1	
2	13119-97J00	GASKET ,INTAKE PIPE	2	
3	13124-97J00	INSULATOR ,CARBURETOR	1	
4	07120-06257	BOLT ,INTAKE PIPE	1	
5	07120-06357	BOLT ,INTAKE PIPE	1	
6	13810-97J00	SILENCER	1	
7	13710-97J00	·ARRESTER ,FLAME	1	
8	09180-06348	·SPACER	2	

FIG.5

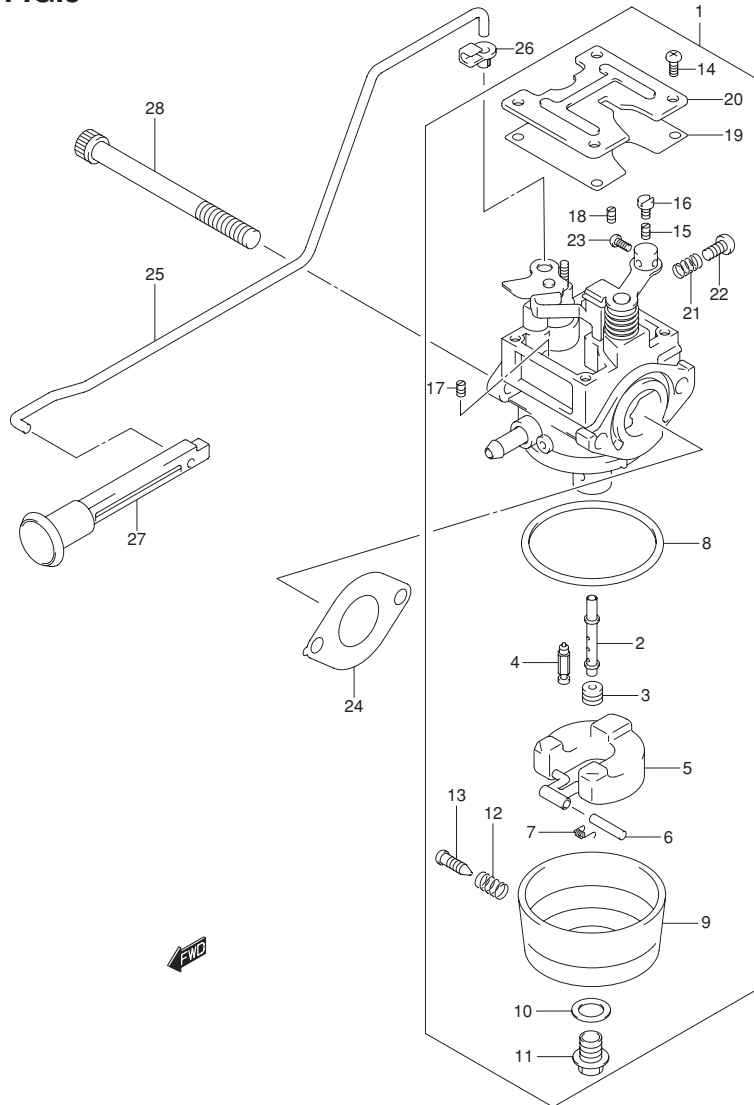


FIG.5 (B-6) CARBURETOR

REF NO.	PART NO.	DESCRIPTION	Q'TY	REMARKS
1-1	13200-97J10	CARBURETOR	1	
1-2	13200-97J20	CARBURETOR	1	MODEL:07 ,08
2-1	13236-97J10	·NOZZLE ,MAIN	1	
2-2	13236-97J20	·NOZZLE ,MAIN	1	MODEL:07 ,08
3-1	09491-68006	·JET ,MAIN( 68 )	1	OPT
3-2	09491-70018	·JET ,MAIN( 70 )	1	
3-3	09491-72015	·JET ,MAIN( 72 )	1	OPT
3-4	09491-62009	·JET ,MAIN( 62 )	1	MODEL:07 ,08 OPT
3-5	09491-64003	·JET ,MAIN( 64 )	1	MODEL:07 ,08
3-6	09491-66005	·JET ,MAIN( 66 )	1	MODEL:07 ,08 OPT
4	13371-97J00	·VALVE ,NEEDLE	1	
5	13250-97J00	·FLOAT	1	
6	13254-97J00	·PIN ,FLOAT	1	
7	13268-97J30	·SPRING	1	
8	13251-97J00	·GASKET	1	
9	13245-97J00	·CHAMBER ,FLOAT	1	
10	13249-97J00	·GASKET	1	
11	13247-97J00	·SCREW	1	
12	13268-97J10	·SPRING	1	
13	13616-97J00	·SCREW	1	
14	13267-97J00	·SCREW	4	
15-1	09492-30018	·JET ,PILOT( 30 )	1	OPT
15-2	09492-32011	·JET ,PILOT( 32 )	1	
15-3	09492-34004	·JET ,PILOT( 34 )	1	OPT
16	13267-97J10	·SCREW	1	
17	09493-34005	·JET ,AIR( 170 )	1	
18	09493-29004	·JET ,PILOT AIR( 145 )	1	
19	13249-97J10	·GASKET	1	
20	13248-97J00	·PLATE	1	



FIG.5

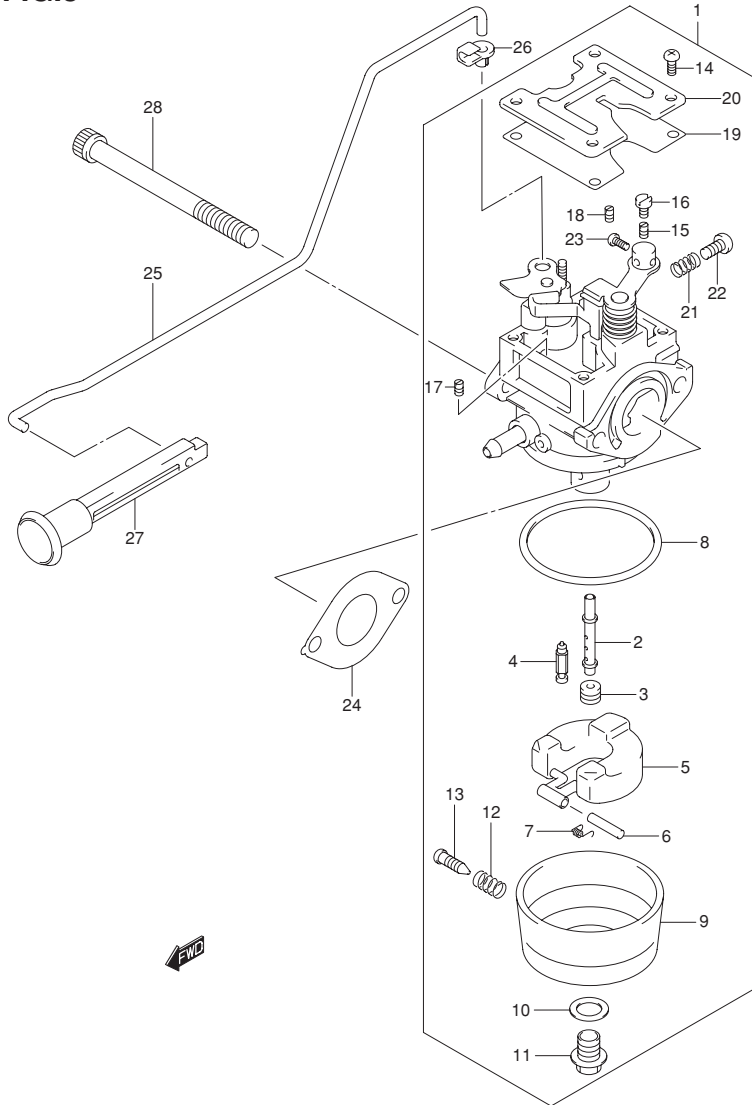


FIG.5 (B-7) CARBURETOR

REF NO.	PART NO.	DESCRIPTION	Q'TY	REMARKS
21	13268-97J20	·SPRING	1	
22	13534-97J00	·SCREW	1	
23	13267-97J20	·SCREW	1	
24	13125-97J00	GASKET ,CARBURETOR	1	
25	13413-97J00	ROD ,CHOKE	1	
26	13436-91J00	CONNECTOR ,CHOKE ROD	1	
27	13631-91J00	KNOB ,CHOKE	1	
28	01547-06757	BOLT	2	

FIG.6

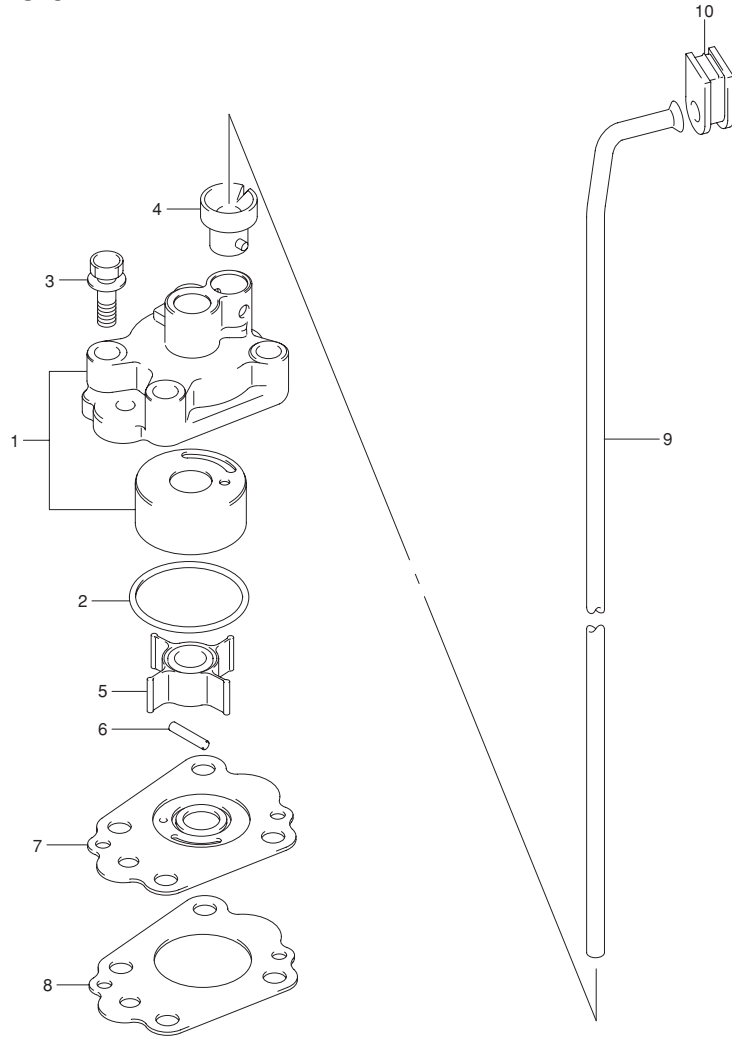


FIG.6 (B-8) WATER PUMP

REF NO.	PART NO.	DESCRIPTION	Q'TY	REMARKS
1	17410-97J00	CASE , WATER PUMP	1	
2	09280-33005	SEAL , WATER PUMP CASE	1	
3	09116-06207	BOLT( 6X30 )	4	
4	17415-97J00	GROMMET , WATER PUMP CASE	1	
5	17461-97J00	IMPELLER , WATER PUMP	1	
6	09202-02006	PIN , PUMP CASE IMPELLER	1	
7	17471-97J00	PANEL , PUMP CASE UNDER	1	
8	17472-97J00	GASKET , PUMP CASE PANEL	1	
9	17561-97J00	TUBE , WATER( S )	1	
10	17563-97J00	GROMMET , WATER TUBE UPPER	1	



FIG.7

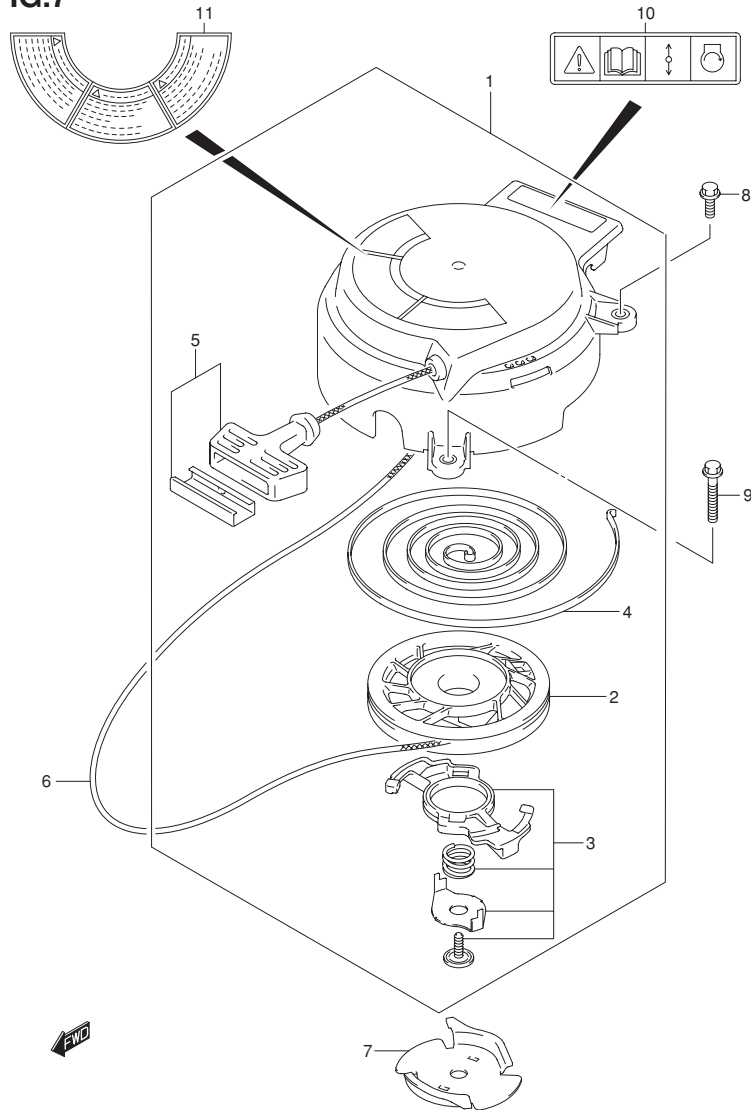


FIG.7 (B-9) RECOIL STARTER

REF NO.	PART NO.	DESCRIPTION	Q'TY	REMARKS
1	18100-97J00	STARTER ASSY ,RECOIL	1	
2	18120-97J00	·REEL	1	
3	18130-97J00	·RATCHET SET	1	
4	18142-04410	·SPRING ,SPIRAL	1	
5	18210-97J00	·GRIP SET	1	
6	99000-81157-50M	ROPE	1	OPT L:50000 1200
7	18211-97J00	PULLEY ,STARTER	1	
8	01550-06207	BOLT	1	
9	01550-06357	BOLT	2	
10	69711-93E10	LABEL ,S.I.G.P	1	
11	61472-93E00	LABEL ,RECOIL STARTER	1	

FIG.8

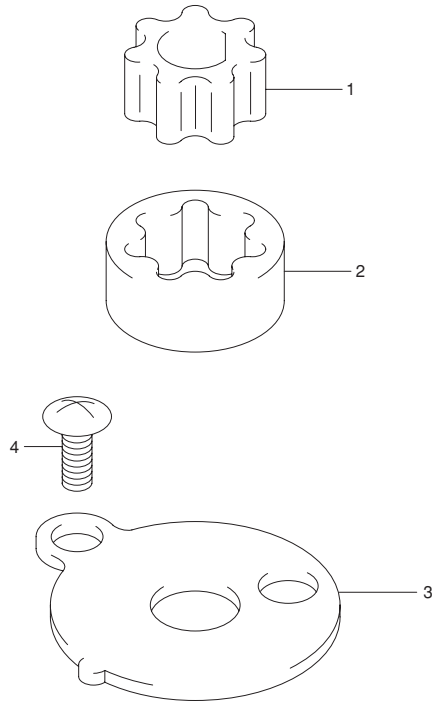


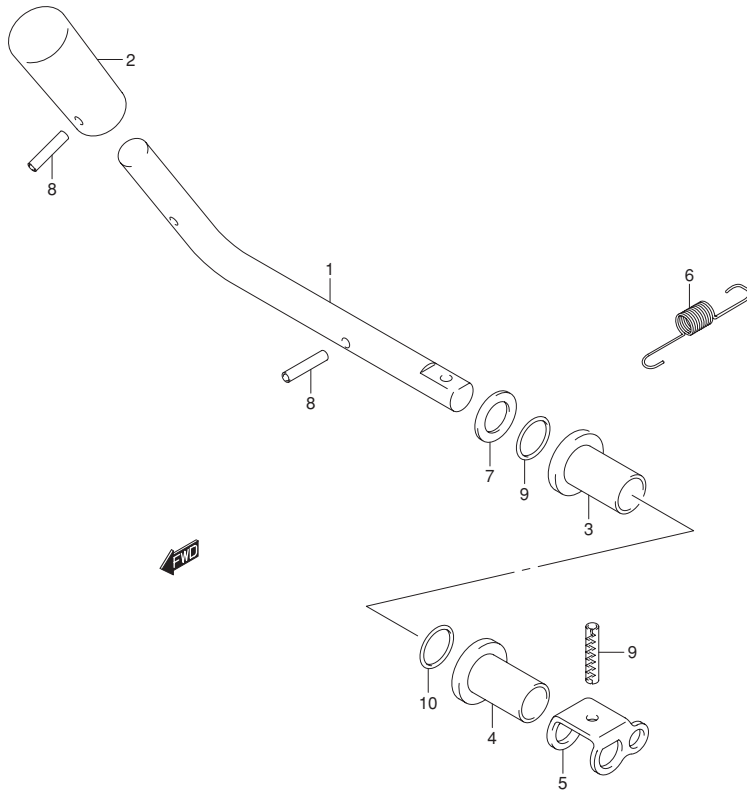
FIG.8 (B-10) OIL PUMP

REF NO.	PART NO.	DESCRIPTION	Q'TY	REMARKS
1	16131-91J00	ROTOR , OIL PUMP INNER	1	
2	16132-91J00	ROTOR , OIL PUMP OUTER	1	
3	16161-97J00	PLATE , OIL PUMP ROTOR	1	
4	02142-0510A	BOLT , OIL PUMP ROTOR PLATE	1	

**FIG.9**

**FIG.9 (C-2) CLUTCH LEVER**

REF NO.	PART NO.	DESCRIPTION	Q'TY	REMARKS
1	21111-97J01	LEVER ,CLUTCH	1	
2	21112-97J00	KNOB ,CLUTCH LEVER	1	
3	21221-97J00	BUSH ,CLUTCH SHAFT	1	
4	21222-97J00	BUSH ,CLUTCH SHAFT NO.2	1	
5	23211-97J01	ARM ,CLUTCH ROD	1	
6	23213-97J00	SPRING ,CLUTCH NOTCH	1	
7	09160-08145	WASHER (8X14X1.5 )	1	
8	09205-03012	PIN ,CLUTCH LEVER	2	
9	09205-04002	PIN ,CLUTCH LEVER	1	
10	09280-08005	O RING( D:1.7 ID:7.7 )	2	



**3**

FIG.10

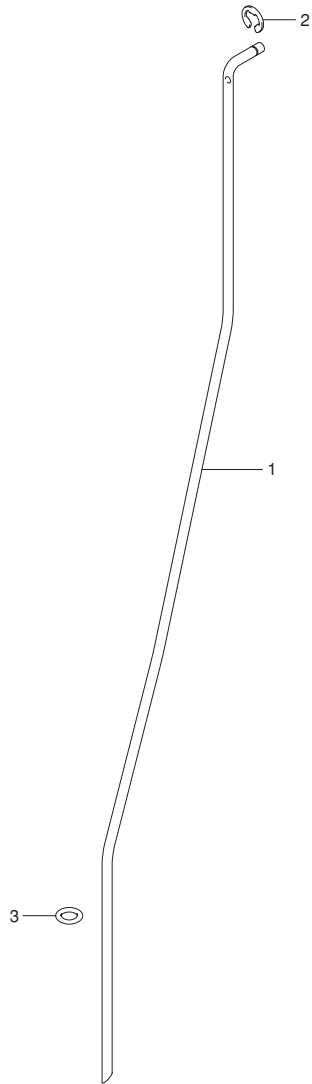


FIG.10 (C-3) SHIFT ROD

REF NO.	PART NO.	DESCRIPTION	Q'TY	REMARKS
1	25111-97J00	ROD ,SHIFT( S)	1	
2	09383-04002	E RING	1	
3	09280-05008	O RING( D:2.9 ID:4.8 )	1	

FIG.11

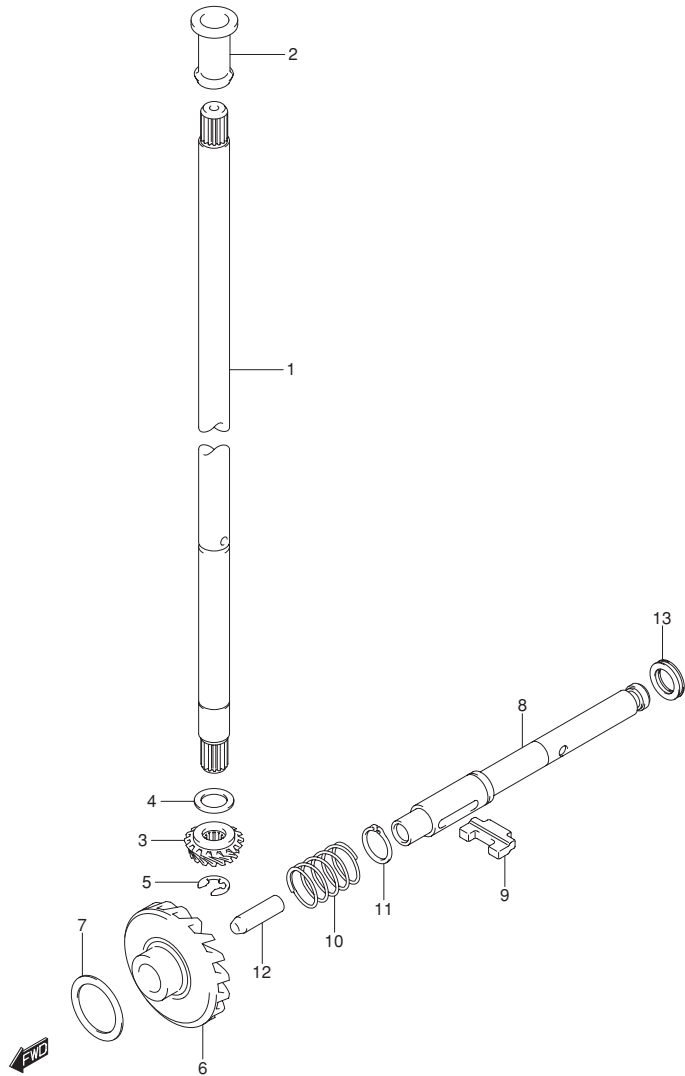


FIG.11 (C-4) DRIVE SHAFT

REF NO.	PART NO.	DESCRIPTION	Q'TY	REMARKS
1	57111-97J00	SHAFT ,DRIVE( S )	1	
2	57130-91J00	BUSH ,DRIVE SHAFT	1	
3	57311-97J00	PINION	1	
4-1	09181-10015	SHIM( 10X16X1.8 )	1	PINION ADJ
4-2	09181-10016	SHIM( 10X16X1.9 )	1	
4-3	09181-10017	SHIM( 10X16X2.0 )	1	
4-4	09181-10018	SHIM( 10X16X2.1 )	1	
4-5	09181-10019	SHIM( 10X16X2.2 )	1	
5	08332-1106A	E RING ,PINION	1	
6	57511-97J00	GEAR ,FORWARD	1	
7-1	09181-17022	SHIM( 17X23X0.3 )	1	FWD GEAR BACKUP
7-2	09181-17023	SHIM( 17X23X0.4 )	1	
7-3	09181-17024	SHIM( 17X23X0.5 )	1	
7-4	09181-17025	SHIM( 17X23X0.6 )	1	
8	57611-97J00	SHAFT ,PROPELLER	1	
9	57621-97J00	SHIFTER ,CLUTCH DOG	1	
10	59441-97J00	SPRING ,RETURN	1	
11	08331-3112A	CIRCLIP ,PROP SHAFT	1	
12	57631-97J00	ROD ,PUSH	1	
13-1	09160-10106	WASHER( 10X14X1.6 )	1	PROP SFT REV THRUST
13-2	09160-10107	WASHER( 10X14X1.7 )	1	
13-3	09181-10015	WASHER( 10X16X1.8 )	1	
13-4	09181-10016	WASHER( 10X16X1.9 )	1	
13-5	09181-10017	WASHER( 10X16X2.0 )	1	

FIG.12

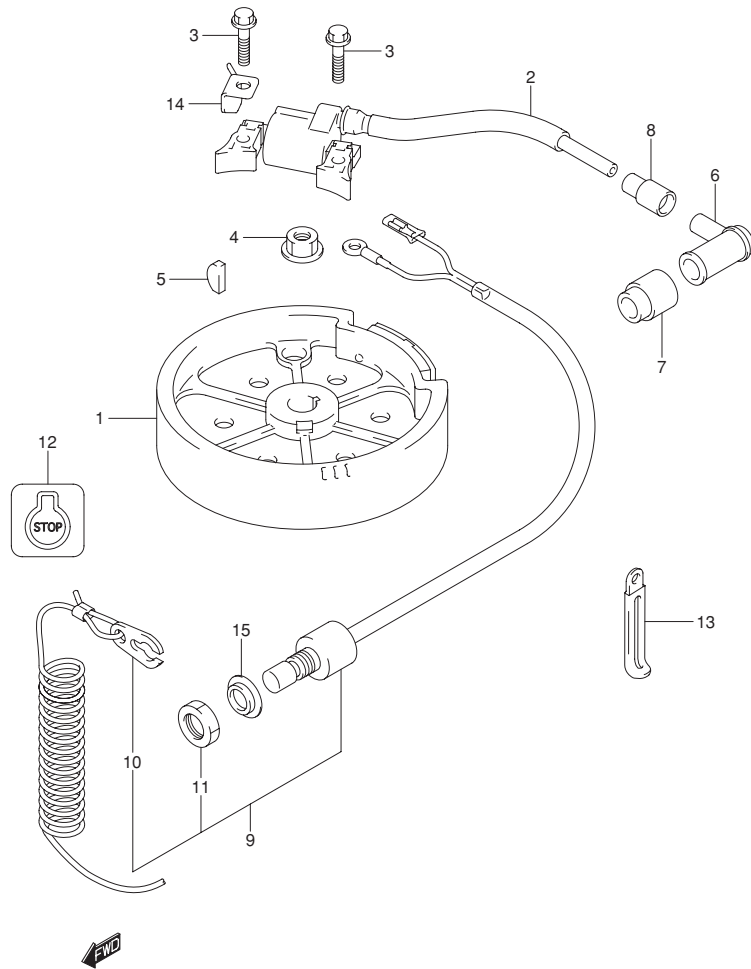


FIG.12 (C-5) MAGNETO

REF NO.	PART NO.	DESCRIPTION	Q'TY	REMARKS
1	32102-97J00	FLYWHEEL	1	
2	33410-97J01	UNIT ,IGNITER	1	
3	01550-06307	BOLT	2	
4	08316-10107	NUT	1	
5	08341-31039	KEY ,WOODRUFF	1	
6	33510-20G00	CAP ,SPARK PLUG	1	
7	33541-97J00	SEAL ,SPARK PLUG	1	
8	33542-97J00	SEAL ,HIGH TENSION CORD	1	
9	37830-97J10	SWITCH ASSY ,EMERGENCY	1	
10	37823-92E01	·PLATE ,LOCK	1	
11	37826-92E00	·NUT	1	
12	37835-95D00	LABEL ,STOP	1	
13	29404-93J10	CLAMP ( L:65 )	1	
14	19183-97J00	HOLDER , THROTTLE CABLE	1	
15	09306-13006	BUSH ,EMERGENCY & STOP SW	1	



FIG.13

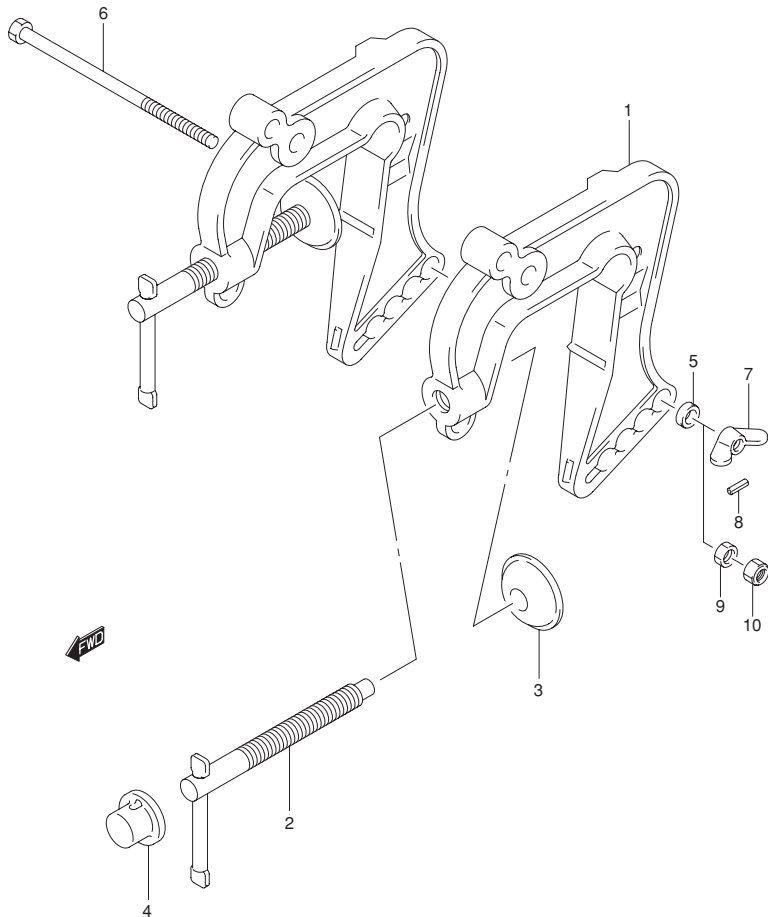


FIG.13 (D-2) CLAMP BRACKET

REF NO.	PART NO.	DESCRIPTION	Q'TY	REMARKS
1-1	41111-97J00-0EP	BRACKET , CLAMP (BLACK)	2	
1-2	41111-97J10-0EP	BRACKET , CLAMP (BLACK)	2	MODEL:08
2	41210-97J00	HANDLE , CLAMP	2	
3	41213-98100	PLATE , CLAMP	2	
4	41214-97J00	CAP , CLAMP SCREW	2	
5	59181-97J10	SPACER , TILT LOCK	1	
6	09101-06009	BOLT , TILT LOCK	1	
7	09144-06004	NUT , TILT LOCK WING	1	MODEL:06 ,07
8	09205-03019	PIN , TILT LOCK	1	MODEL:06 ,07
9	23118-94J00	NUT , TILT LOCK NO.1	1	MODEL:08
10	09159-06079	NUT , TILT LOCK NO.2	1	MODEL:08

5

FIG.14

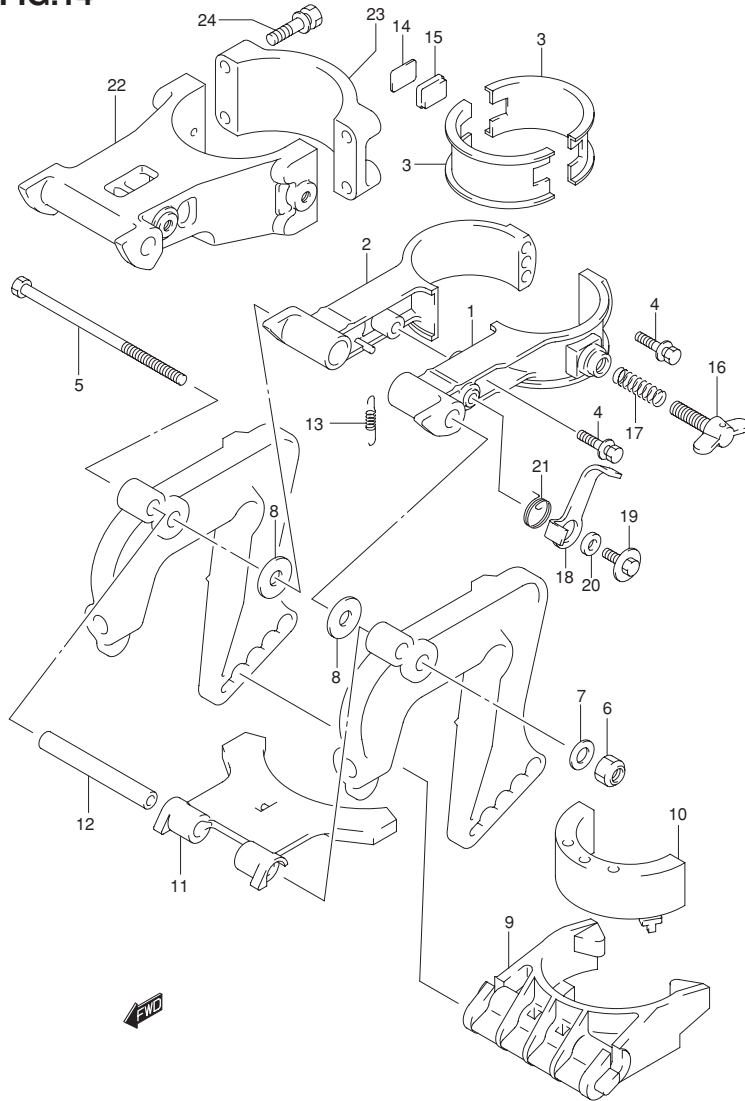


FIG.14 (D-3) SWIVEL BRACKET

REF NO.	PART NO.	DESCRIPTION	Q'TY	REMARKS
1	43111-97J00-0EP	BRACKET ,SWIVEL PORT( BLACK )	1	MODEL:06 ,07 43110 - 97J10 - 0EP BRACKET ASSY ,SWIVEL
2	43121-97J00-0EP	BRACKET ,SWIVEL STBD( BLACK )	1	MODEL:06 ,07 43110 - 97J10 - 0EP BRACKET ASSY ,SWIVEL
3	43711-97J00	BUSH , STEERING UPPER	2	
4	09116-06121	BOLT ,SWIVEL BRACKET	2	MODEL:06 ,07
5	59111-97J00	BOLT ,SWIVEL SHAFT	1	
6	09159-08018	NUT ,SWIVEL SHAFT	1	
7	09160-08082	WASHER ,SWIVEL SHAFT ( 8.5X16X1.2 )	1	
8	09160-08081	WASHER ,TILT FRICTION ( 8.5X23X1.5 )	2	
9	45411-97J00	BLOCK ,THRUST	1	
10	54151-97J00	MOUNT ,LOWER THRUST	1	
11	43751-97J01	BRACKET ,STOPPER	1	
12	43752-97J00	SHAFT ,STOPPER	1	
13	59443-97J00	SPRING ,STOPPER	1	
14-1	43415-97J00	PLATE ,STEERING ADJUSTER	1	
14-2	43415-97J10	PLATE ,STEERING ADJUSTER	1	MODEL:08
15-1	43416-97J00	RUBBER ,STEERING ADJUSTER	1	
15-2	43416-97J10	RUBBER ,STEERING ADJUSTER	1	MODEL:08
16	09119-06110	BOLT ,STEERING ADJUSTER	1	
17	09440-09042	SPRING ,STEERING ADJUSTER	1	
18	41221-97J10	LEVER ,TILT LOCK	1	41221 - 97J00
19	09116-06127	BOLT ,TILT LOCK LEVER	1	
20	59181-97J10	SPACER ,TILT LOCK LEVER	1	
21-1	59444-97J00	SPRING ,TILT LOCK	1	
21-2	59444-97J10	SPRING ,TILT LOCK	1	MODEL:08
22	43111-97J10-0EP	BRACKET ,SWIVEL	1	MODEL:08
23	43121-97J10-0EP	COVER ,SWIVEL BRACKET	1	MODEL:08
24	09116-06207	BOLT ,SWIVEL BRACKET	4	MODEL:08
25	43110-97J10-0EP	BRACKET ASSY ,SWIVEL	1	OPT ,NOT SHOWN INC.NO.22 ,23 ,24 MODEL:08

FIG.15

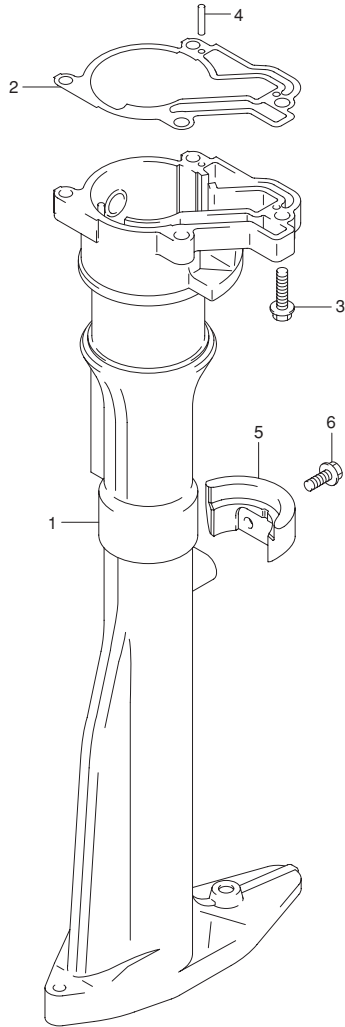


FIG.15 (D-4) DRIVE SHAFT HOUSING

REF NO.	PART NO.	DESCRIPTION	Q'TY	REMARKS
1	52111-97J00-0EP	HOUSING ,DRIVE SHAFT (BLACK )	1	
2	52113-97J00	GASKET ,DRIVE SHAFT HSG	1	
3	29116-93J00	BOLT ,DRIVE SHAFT HSG	4	
4	09205-03019	PIN ,DRIVE SHAFT HSG KNOCK	2	
5	52112-97J10-0EP	STOPPER ,REV THRUST (BLACK )	1	52112 - 97J00 - 0EP
6	29116-93J00	BOLT ,STOPPER REV THRUST	2	

5



FIG.16

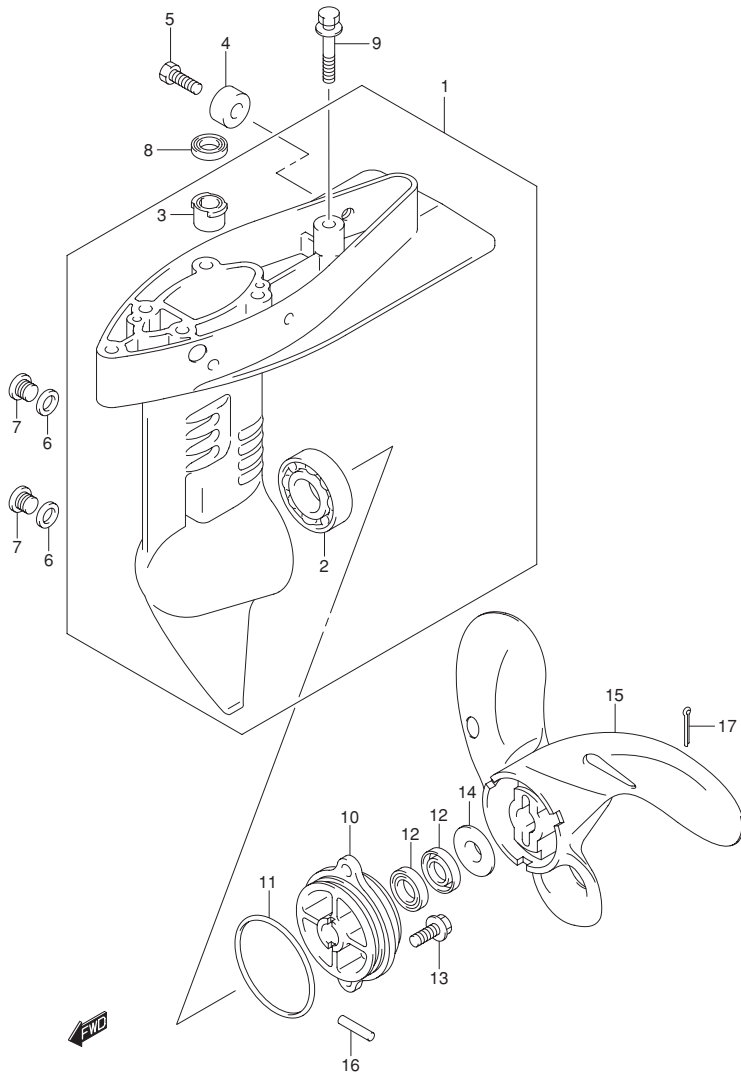


FIG.16 (D-5) GEAR CASE

REF NO.	PART NO.	DESCRIPTION	Q'TY	REMARKS
1-1	55110-97J00-0EP	CASE ,GEAR(BLACK)	1	55110 - 97J01 - 0EP USED WITH 09116 - 06094 X2
1-2	55110-97J01-0EP	CASE ,GEAR(BLACK)	1	DF2.5:687145 ~
2	09262-17019	·BEARING ,FORWARD GEAR	1	
3	59311-97J00	·BUSH ,PINION	1	
4	55321-87J00	ANODE ,PROTECTION	1	
5	09103-06281	BOLT ,ANODE PROTECTION	1	
6	59178-97J00	GASKET ,DRAIN PLUG	2	
7	09248-08001	PLUG ,DRAIN	2	
8	59299-97J00	SEAL ,DRIVE SHAFT OIL	1	
9	09116-06099	BOLT (6X35)	2	
10	56120-97J00-0EP	HOUSING ,PROP SFT BRG (BLACK)	1	
11	59291-97J00	O RING ,PROP SFT BRG HOUSING	1	
12	09282-10008	SEAL ,PROP SFT OIL	2	
13	09116-06094	BOLT ,PROP SFT BRG HSG (6X15)	2	
14	56123-97J00	PROTECTOR ,PROP SFT OIL SEAL	1	MODEL:08
15-1	58111-97J00-019	PROPELLER (3X188X135)	1	MODEL:06 ~ 08
15-2	58111-98465-019	PROPELLER (3X188X115)	1	MODEL:06
16	09202-04002	PIN ,SHEAR	1	
17	09204-02001	PIN ,COTTER	1	

FIG.17

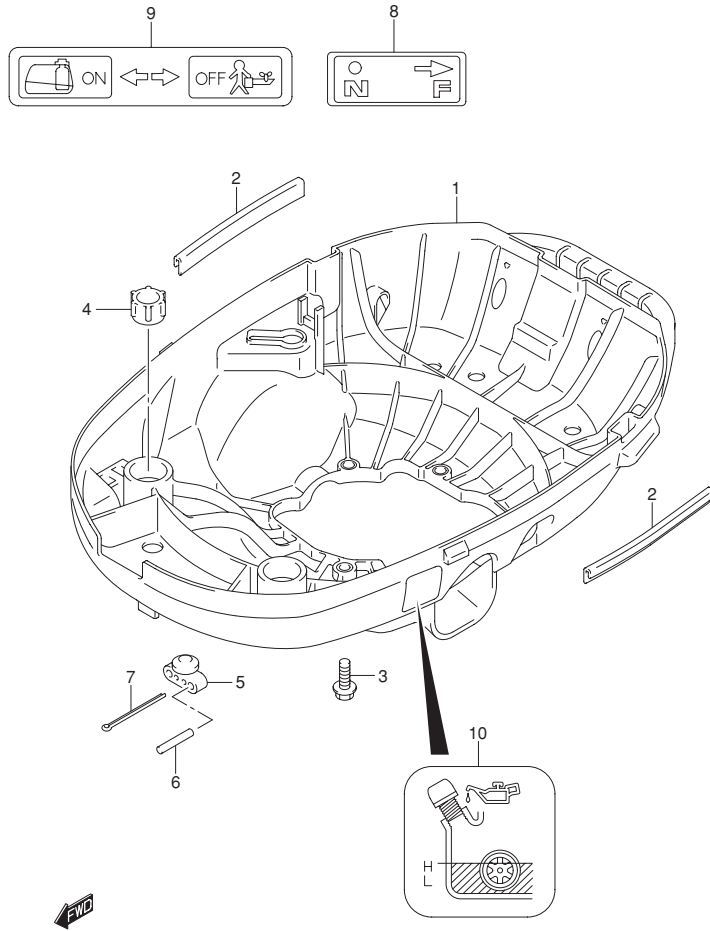


FIG.17 (D-6) LOWER COVER

REF NO.	PART NO.	DESCRIPTION	Q'TY	REMARKS
1	61110-97J00-YR9	COVER , LOWER ( GRAY )	1	
2	61135-97J00	CUSHION , LOWER COVER	2	
3	29116-93J00	BOLT ( 6X20 )	4	
4	61151-91J01	CUSHION , FUEL TANK HOLDER	2	
5	61521-91J00	HOLDER , SHEAR PIN	1	
6	09202-04002	PIN , SHEAR	2	
7	09204-02001	PIN , PROP NUT COTTER	1	
8	21131-97J20	MARK , CLUTCH SHIFT	1	
9	61211-97J00	MARK , FUEL COCK	1	
10	61212-97J00	MARK , OIL LEVEL	1	

5

FIG.18

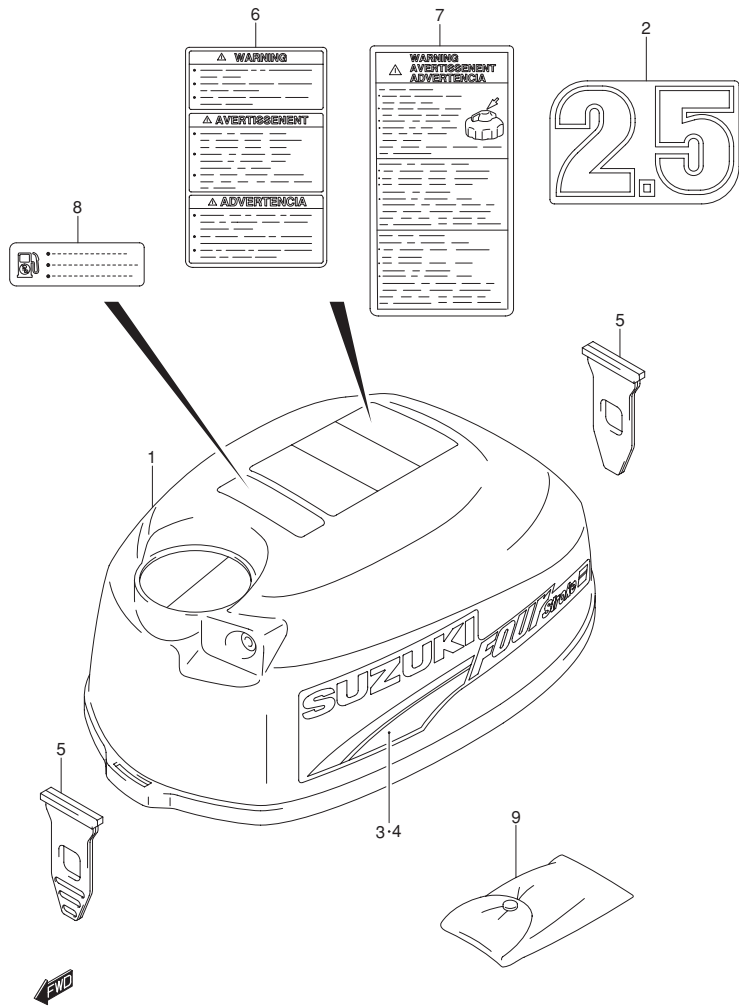


FIG.18 (D-7) ENGINE COVER

REF NO.	PART NO.	DESCRIPTION	Q'TY	REMARKS
1	61411-97J00-YR9	COVER , ENGINE UPPER	1	
2	61435-97J10	MARK , EMBLEM REAR ( DF2.5 )	1	
3	61443-97J00	STRIPE , ENGINE COVER STBD	1	
4	61453-97J00	STRIPE , ENGINE COVER PORT	1	
5	61611-97J00	FASTENER , ENGINE COVER	2	
6	61458-97J00	LABEL , ENGINE COVER	1	MODEL:06
7	61458-97J10	LABEL , ENGINE COVER	1	MODEL:07 ,08
8	69716-99E13	LABEL , FUEL LIMITATION	1	
9	09800-01007	TOOL ASSY	1	

FIG.19

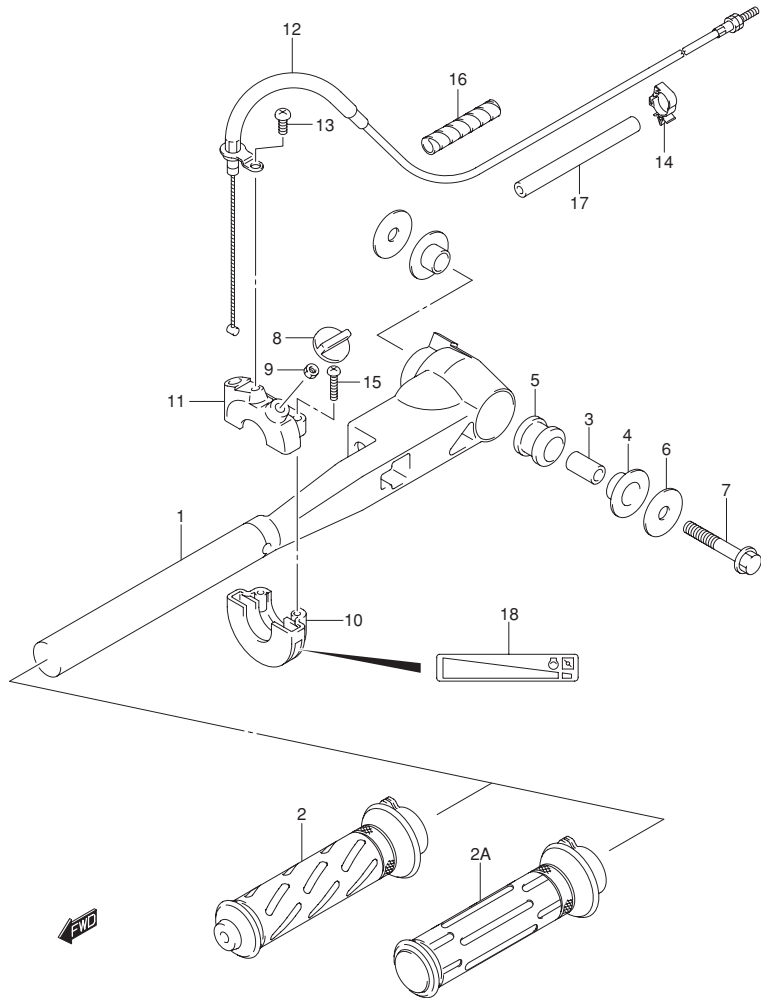


FIG.19 (D-8) TILLER HANDLE

REF NO.	PART NO.	DESCRIPTION	Q'TY	REMARKS
1	63111-97J00-0EP	HANDLE ,TILLER( BLACK )	1	
2	57110-09G10	GRIP ,THROTTLE	1	MODEL:06
2A	63210-97J00	GRIP ,THROTTLE	1	MODEL:07 ,08
3	59181-97J00	SPACER ,TILLER HANDLE	1	
4	59315-97J00	BUSH ,TILLER HANDLE	2	
5	63116-97J00	MOUNT ,TILLER HANDLE	1	
6	09160-08152	WASHER ,TILLER HANDLE ( 8.5X33X1.5 )	2	
7	09116-08128	BOLT ,HANDLE PIVOT ( 8X40 )	1	
8	63244-97J00	KNOB , THROTTLE ADJUST	1	
9	09140-05005	NUT , THROTTLE ADJUST KNOB( M5)	1	
10	57121-09G00	CASE , THROTTLE UPPER	1	
11	67821-97J00	CASE , THROTTLE LOWER	1	
12	63610-97J00	CABLE ASSY , THROTTLE	1	
13	02112-05127	SCREW , THROTTLE CABLE	1	
14	23915-78A20	CLAMP , THROTTLE CABLE	2	
15	59125-97J00	SCREW , THROTTLE CABLE	2	
16	33833-91J00	TUBE , THROTTLE CABLE ( 6X8X250)	1	L:250 50
17	09352-90133-600	PROTECTOR , THROTTLE CABLE ( 9X13X600 )	1	L:600 90
18	69714-97J01	MARK ,HANDLE GRIP	1	

FIG.20

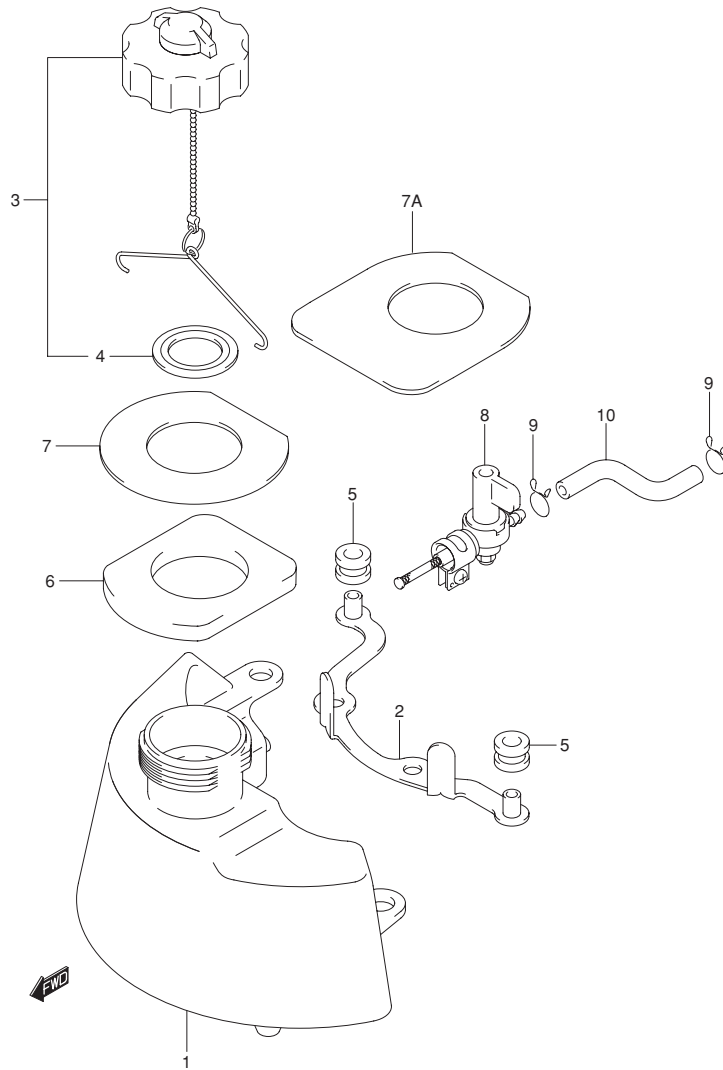


FIG.20 (D-9) FUEL TANK

REF NO.	PART NO.	DESCRIPTION	Q'TY	REMARKS
1	65110-97J00	TANK , FUEL	1	
2	65260-97J00	BRACKET , FUEL TANK	1	
3	65510-91J01	CAP ASSY , FUEL TANK	1	
4	09168-32001	GASKET , TANK CAP	1	
5	09320-09039	CUSHION	2	
6	65281-97J00	GROMMET , FUEL TANK	1	
7	65284-97J00	RUBBER , FUEL TANK GROMMET	1	MODEL:06 ,07 65284 - 97J11
7A	65284-97J11	RUBBER , FUEL TANK GROMMET	1	MODEL:08
8	66100-97J00	COCK ASSY , FUEL	1	
9	15191-97J00	HOSE , FUEL( COCK TO CARB )	1	
10	59412-91J00	CLIP , FUEL HOSE	2	



FIG.21

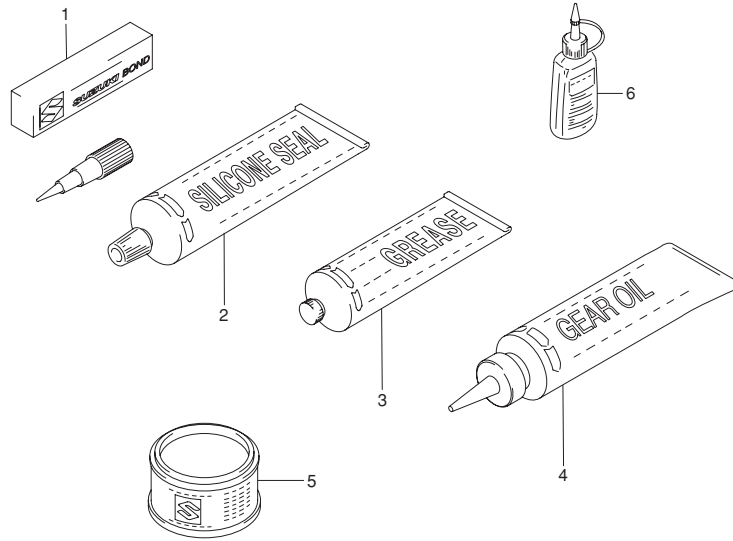
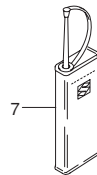
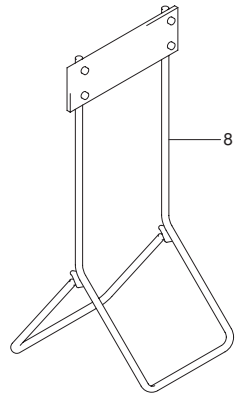


FIG.21 (D-10) OPTIONAL

REF NO.	PART NO.	DESCRIPTION	Q'TY	REMARKS
1-1	99000-31110	LIQUID GASKET NO.1104 GRAY	1	250G FOR CRANK CASE
1-2	99000-31010	LIQUID GASKET BLACK	1	150G FOR CRANK CASE
2	99000-31120	LIQUID GASKET NO.1212C SILICON	1	50G FOR GEAR CASE
3	99000-25161	GREASE , WATER RESISTANT	1	250G
4	99000-22540	GEAR OIL , OUTBOARD MOTOR	1	400CC
5	99000-25011	SUPER GREASE (A )NO.3	1	450G FOR CRANK OIL SEAL
6-1	99000-32050	THREAD LOCK NO.1342	1	50G ,BLUE
6-2	99000-32020	THREAD LOCK NO.1333B	1	50G ,RED
7	99000-32040	THREAD LOCK NO.1401	1	200G
8	09914-39911	HANGER ,ENGINE	1	
9-1	99011-97J00-053	MANUAL , OWNER'S ('06 )	1	12 LANGUAGE DRAWING NOT SHOWN
9-2	99011-97J01-053	MANUAL , OWNER'S ('07 )	1	12 LANGUAGE MODEL:07
9-3	99011-97J02-055	MANUAL , OWNER'S ('08 )	1	13 LANGUAGE MODEL:08

6



## PARTS NUMBER INDEX

PART NO.	FIG.NO.-REF.NO.	PART NO.	FIG.NO.-REF.NO.	PART NO.	FIG.NO.-REF.NO.	
10000		13236-97J10	5-2	21111-97J01	9-1	
		13236-97J20	5-2	21112-97J00	9-2	
		13245-97J00	5-9	21131-97J20	17-8	
		13247-97J00	5-11	21221-97J00	9-3	
		13248-97J00	5-20	21222-97J00	9-4	
11110-97J00	1-1	13249-97J00	5-10	23118-94J00	13-9	
11110-97J10	1-1	13249-97J10	5-19	23211-97J01	9-5	
11118-97J00	1-4	13250-97J00	5-5	23213-97J00	9-6	
11119-97J00	1-5	13251-97J00	5-8	23915-78A20	19-14	
11141-97J02	1-2	13254-97J00	5-6	25111-97J00	10-1	
11171-97J00	1-6	13267-97J00	5-14	29116-93J00	15-3	
11173-97J00	2-21	13267-97J10	5-16		15-6	
11174-97J00	2-24	13267-97J20	5-23		17-3	
11179-97J00	2-23	13268-97J10	5-12	29404-93J10	12-13	
11189-97J00	1-7	13268-97J20	5-21			
11200-97J00	2-1	13268-97J30	5-7	30000		
11300-97J00	2-4	13371-97J00	5-4			
11351-97J01	2-6	13413-97J00	5-25			
11382-97J00	2-11	13436-91J00	5-26			
11431-97J00	2-27	13534-97J00	5-22			
11452-91J00	2-25	13616-97J00	5-13	32102-97J00	12-1	
12100-97J00-050	3-26	13631-91J00	5-27	33410-97J01	12-2	
12111-97J00-0B0	3-1	13710-97J00	4-7	33510-20G00	12-6	
12111-97J10-0B0	3-1	13810-97J00	4-6	33541-97J00	12-7	
12140-97J00	3-2	15191-97J00	20-9	33542-97J00	12-8	
12140-97J00-050	3-27	16131-91J00	8-1	33833-91J00	19-16	
12151-97J00	3-3	16132-91J00	8-2	37823-92E01	12-10	
12160-97J00-0A0	3-5	16161-97J00	8-3	37826-92E00	12-11	
12163-92F00	3-6	17410-97J00	6-1	37830-97J10	12-9	
12220-97J01-0B0	3-7	17415-97J00	6-4	37835-95D00	12-12	
12242-97J00	3-7A	17461-97J00	6-5	40000		
12710-97J00	3-9	17471-97J00	6-7			
12742-97J00	3-10	17472-97J00	6-8			
12743-97J00	3-11	17561-97J00	6-9			
12840-97J00	3-12	17563-97J00	6-10			
12842-22G10	3-13	17670-91J00	2-17	41111-97J00-0EP	13-1	
12843-27A00	3-14	17681-97J00	2-18	41111-97J10-0EP	13-1	
12845-97J00	3-17	17685-97J00	2-19	41210-97J00	13-2	
12847-22G00	3-18	18100-97J00	7-1	41213-98100	13-3	
12894-97J00	3-16	18120-97J00	7-2	41214-97J00	13-4	
12911-97J00	3-21	18130-97J00	7-3	41221-97J10	14-18	
12915-97J00	3-22	18142-04410	7-4	43110-97J10-0EP	14-25	
12921-97J00	3-23	18210-97J00	7-5	43111-97J00-0EP	14-1	
12931-22G00	3-24	18211-97J00	7-7	43111-97J10-0EP	14-22	
13111-97J00	4-1	19183-97J00	12-14	43121-97J00-0EP	14-2	
13119-97J00	4-2	20000		43121-97J10-0EP	14-23	
13124-97J00	4-3			43415-97J00	14-14	
13125-97J00	5-24			43415-97J10	14-14	
13200-97J10	5-1			43416-97J00	14-15	
13200-97J20	5-1			43416-97J10	14-15	

PART NO.	FIG.NO.-REF.NO.	PART NO.	FIG.NO.-REF.NO.	PART NO.	FIG.NO.-REF.NO.	
43711-97J00	14-3	60000		99011-97J00-053	21-9	
43751-97J01	14-11			99011-97J01-053	21-9	
43752-97J00	14-12			99011-97J02-055	21-9	
45411-97J00	14-9					
50000		61110-97J00-YR9	17-1	00000		
		61135-97J00	17-2			
		61151-91J01	17-4			
		61211-97J00	17-9			
	61212-97J00	17-10				
52111-97J00-0EP	15-1	61411-97J00-YR9	18-1	01547-05107	1-8	
52112-97J10-0EP	15-5	61435-97J10	18-2	01547-06127	2-28	
52113-97J00	15-2	61443-97J00	18-3	01547-06757	5-28	
54151-97J00	14-10	61453-97J00	18-4	01550-06207	2-20	
55110-97J00-0EP	16-1	61458-97J00	18-6		7-8	
55110-97J01-0EP	16-1	61458-97J10	18-7	01550-06257	2-8	
55321-87J00	16-4	61472-93E00	7-11	01550-06307	12-3	
55321-95J00	2-15	61521-91J00	17-5	01550-06357	7-9	
56120-97J00-0EP	16-10	61611-97J00	18-5	02112-05127	19-13	
56123-97J00	16-14	63111-97J00-0EP	19-1	02112-0612A	2-26	
57110-09G10	19-2	63116-97J00	19-5	02142-0510A	8-4	
57111-97J00	11-1	63210-97J00	19-2A	02142-06127	2-22	
57121-09G00	19-10	63244-97J00	19-8	04221-05109	2-7	
57130-91J00	11-2	63610-97J00	19-12	07120-06257	4-4	
57311-97J00	11-3	65110-97J00	20-1	07120-06357	4-5	
57511-97J00	11-6	65260-97J00	20-2	08211-17241	3-8	
57611-97J00	11-8	65281-97J00	20-6	08316-10107	12-4	
57621-97J00	11-9	65284-97J00	20-7	08322-0104A	3-20	
57631-97J00	11-12	65284-97J11	20-7A	08331-3112A	11-11	
58111-97J00-019	16-15	65510-91J01	20-3	08332-1106A	11-5	
58111-98465-019	16-15	66100-97J00	20-8	08341-31039	12-5	
59111-97J00	14-5	67821-97J00	19-11	09101-06009	13-6	
59125-97J00	19-15	69711-93E10	7-10	09103-06281	16-5	
59178-97J00	16-6	69714-97J01	19-18	09116-06094	16-13	
59181-97J00	19-3	69716-99E13	18-8	09116-06099	16-9	
59181-97J10	13-5	90000		09116-06121	14-4	
	14-20			09116-06127	14-19	
59291-97J00	16-11			09116-06207	6-3	
59295-97J00	2-2				14-24	
59295-97J10	2-9		09116-08128	19-7		
59295-97J20	2-10	99000-22540	21-4	09119-06110	14-16	
59299-97J10	16-8	99000-25011	21-5	09126-05011	2-16	
59311-97J00	16-3	99000-25161	21-3	09140-05005	19-9	
59315-97J00	19-4	99000-31010	21-1	09144-06004	13-7	
59382-97J00	3-4	99000-31110	21-1	09159-06079	13-10	
59412-91J00	20-10	99000-31120	21-2	09159-08018	14-6	
59441-97J00	11-10	99000-32020	21-6	09160-08081	14-8	
59443-97J00	14-13	99000-32040	21-7	09160-08082	14-7	
59444-97J00	14-21	99000-32050	21-6	09160-08145	9-7	
59444-97J10	14-21	99000-81157-50M	7-6	09160-08152	19-6	

PART NO.	FIG.NO.-REF.NO.	PART NO.	FIG.NO.-REF.NO.	PART NO.	FIG.NO.-REF.NO.
09160-10106	11-13	09491-70018	5-3		
09160-10107	11-13	09491-72015	5-3		
09168-10022	2-13	09492-30018	5-15		
09168-32001	20-4	09492-32011	5-15		
09180-06348	4-8	09492-34004	5-15		
-----					
09181-10015	11-4	09493-29004	5-18		
	11-13	09493-34005	5-17		
09181-10016	11-4	09800-01007	18-9		
	11-13	09914-39911	21-8		
09181-10017	11-4				
-----					
	11-13				
09181-10018	11-4				
09181-10019	11-4				
09181-17022	11-7				
09181-17023	11-7				
-----					
09181-17024	11-7				
09181-17025	11-7				
09202-02006	6-6				
09202-04002	16-16				
	17-6				
-----					
09204-02001	16-17				
	17-7				
09205-03012	9-8				
09205-03019	13-8				
	15-4				
-----					
09205-04002	9-9				
09206-08008	1-3				
09248-08001	16-7				
09248-10008	2-14				
09261-04005	3-19				
-----					
09261-04017	3-15				
09262-17019	16-2				
09262-17023	2-3				
	2-5				
09280-05008	10-3				
-----					
09280-08005	9-10				
09280-15007	2-12				
09280-33005	6-2				
09282-10008	16-12				
09289-04006	3-25				
-----					
09306-13006	12-15				
09320-09039	20-5				
09352-90133-600	19-17				
09383-04002	10-2				
09440-09042	14-17				
-----					
09482-00406	1-9				
09491-62009	5-3				
09491-64003	5-3				
09491-66005	5-3				
09491-68006	5-3				

PART NO.	FIG.NO.-REF.NO.	PART NO.	FIG.NO.-REF.NO.	PART NO.	FIG.NO.-REF.NO.

## SUZUKI **DF2.5** '06 ~ '08 MODEL PARTS CATALOGUE

---

3rd Edition  
Published in Jun., 2007

© 2007 **SUZUKI MOTOR CORPORATION** All rights reserved.

No part of this document may be reproduced or transmitted in any form or by any means, electronic or mechanical, for any purpose, without the express written permission of Suzuki Motor Corporation.

### **SUZUKI MOTOR CORPORATION**

Service & Parts Readiness Group, Field Service Department  
300 Takatsuka, Minami, Hamamatsu, Japan

---

Reprint Prohibited (S)



**1** INFORMATION  
ILLUSTRATION INDEX

**2** ENGINE

**3** TRANSMITING

**4** ELECTRICAL

**5** EXTERIOR

**6** OPTION

**7** PARTS NUMBER INDEX

# SUZUKI MOTOR CORPORATION



\* 9 9 0 0 B - 4 5 2 0 8 - 0 2 0 \*

9900B-45208-020

